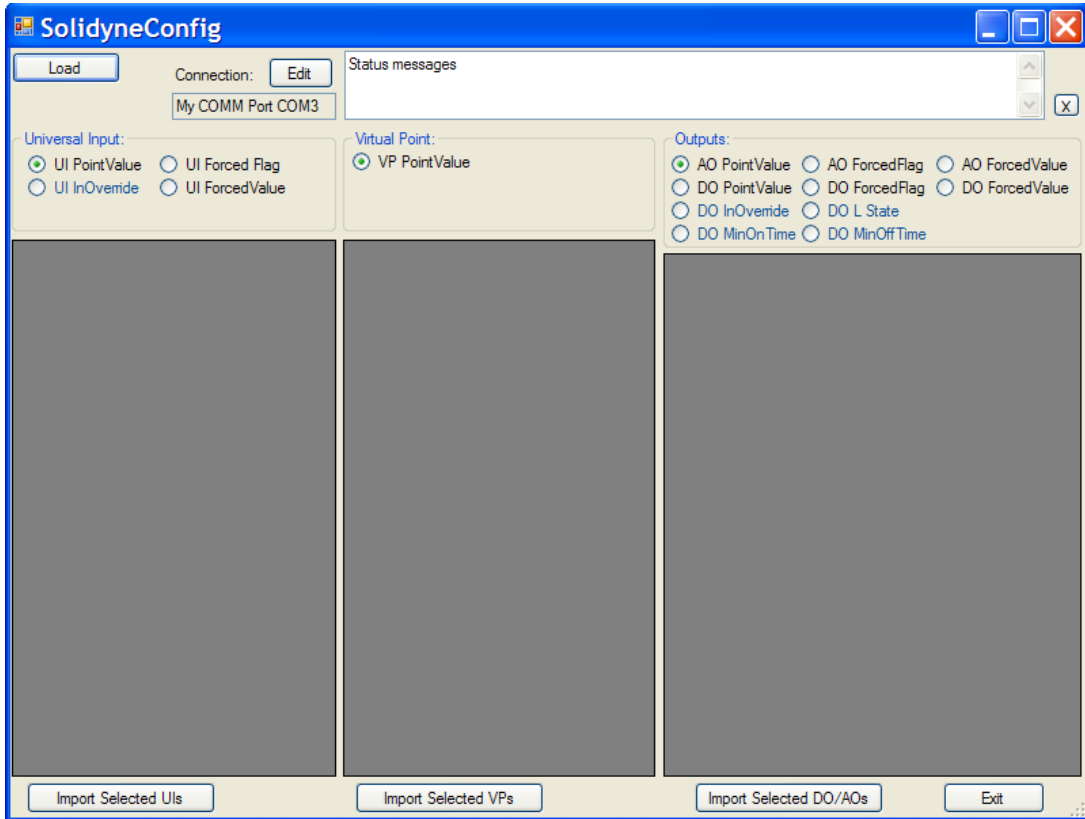

InetSupervisor -

SolidyneDriver_UsersGuide

Copyright © 2005 Quark Communications Inc. All rights reserved.
Revised on January 12, 2007

1.0 SolidyneConfig - general

The *SolidyneConfig* utility is used for the importing of *Solidyne* specific points into the Inet-Supervisor database. To start the SolidyneConfig click *Start > Programs > HMI > SolidyneConfig*. Once imported the *SolidyneDriver* is then used to transfer point values to and from your *Solidyne* network.



2.0 Importing Network Points

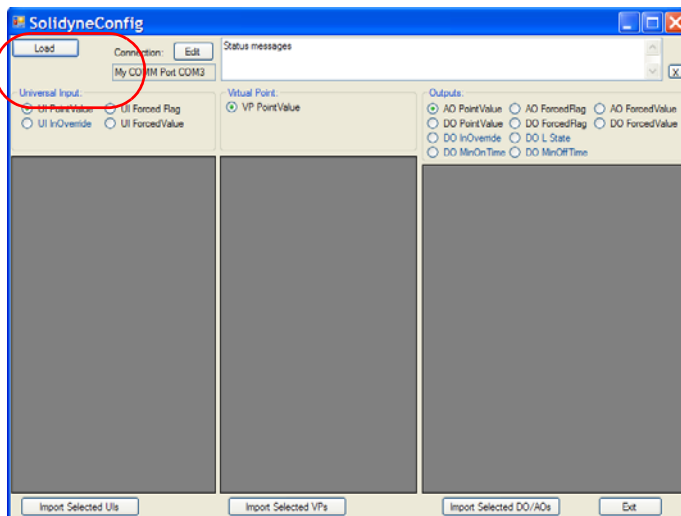
2.1 Attaching Solidyne .csv Files

The first step in importing the *Solidyne* network points to InetSupervisor database is attaching the *SolidyneConfig* to your *Solidyne* network.

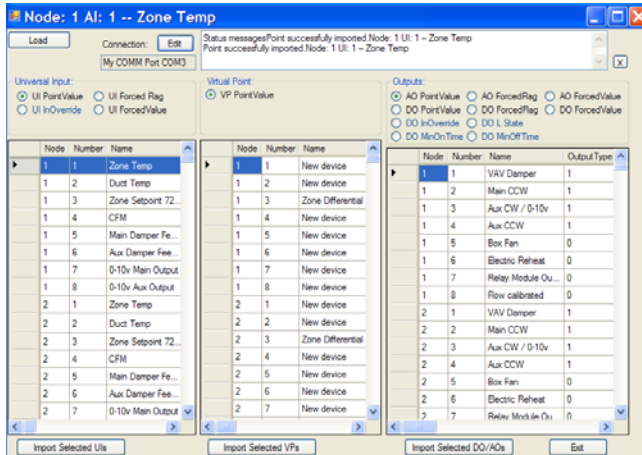
1. Export the appropriate *Solidyne* network to .CSV files using the *Solidyne IMCS* software.
2. Paste the exported .CSV files in the *SolidyneCSV* folder located under *c:\Lonworks\Apps\QCI\SolidyneConfig*.
3. Rename the *Output.csv* file to *myOutput.csv*. **This operation is a must, please do not skip.**

2.2 Importing Solidyne Points

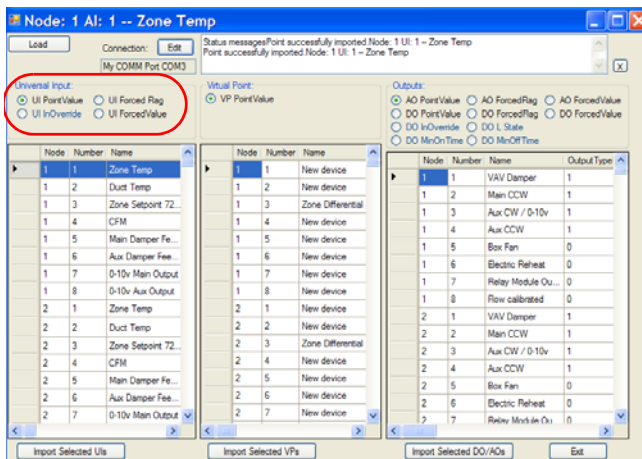
1. Start *SolidyneConfig* as described above.
2. Click on “Load” button.



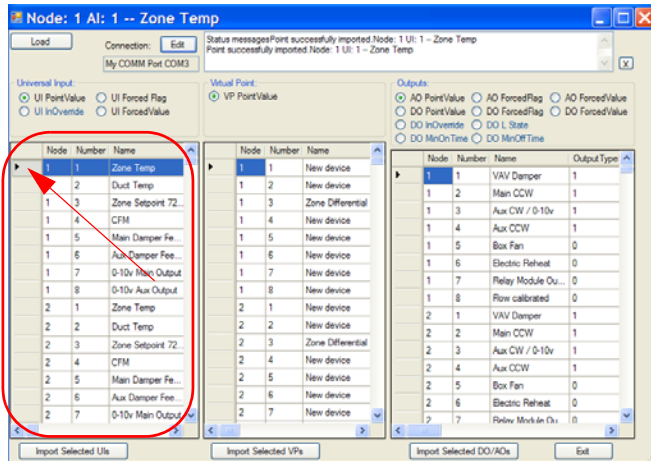
3. All the network *Universal Input*, *Virtual Points*, and *Outputs* will load into their appropriate tables.



4. Select the *Universal Input* property from the radio button options.

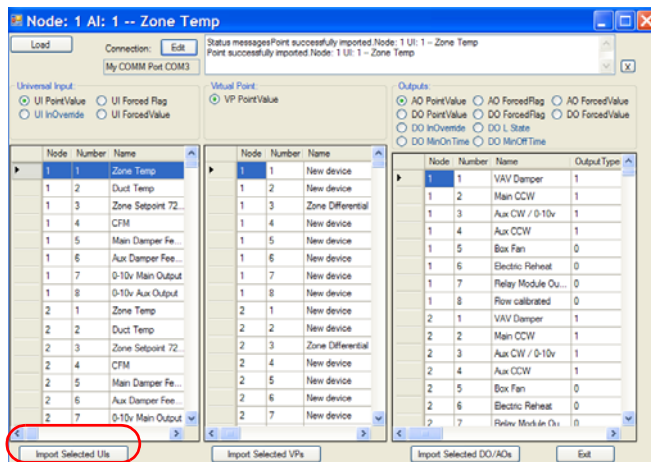


5. Select the **Universal Input** points desired to be imported by highlighting the table row. Multiple points may be selected by using the **Shift** and **Ctrl** keys. To select a point you click on a tab to

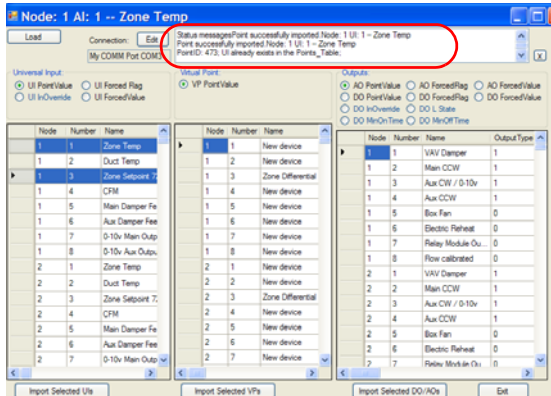


the left of each table. See the red arrow above.

6. When finished selecting, click the “Import Selected UIs” button to import.



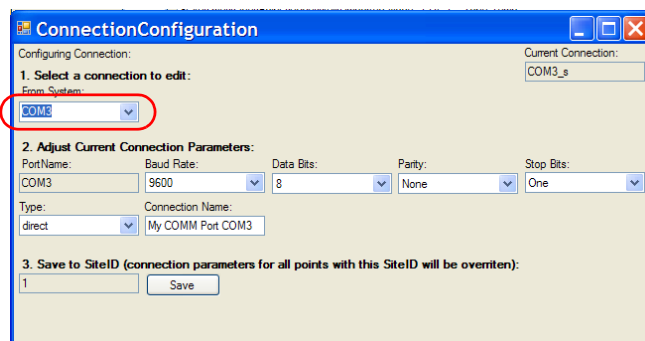
- Repeat process for any **Virtual Points** and **Outputs** you may wish to import. The SolidyneConfig will check for existing points before importing, to eliminate multiple instances of the same point.



2.3 Connection Editor

The **Connection Editor** is used to modify the serial network connection parameters. As points are imported they don't know what connection will be used to communicate therefore you must edit the connection each time after you import points.

- To start click the connection "Edit" button on the **SolidyneConfig**.
- The **Connection Editor** will appear with the current connection parameters.
- Use the drop-down box to choose appropriate com port for the connection.



4. Adjust the comm port parameters then click the “Save” button.

The screenshot shows a Windows-style dialog box titled "ConnectionConfiguration". It has a blue title bar with standard window controls. The main area is light beige and contains the following sections:

- Configuring Connection:** Located at the top left.
- Current Connection:** A text box at the top right containing "COM3_s".
- 1. Select a connection to edit:** A section with a "From System:" label and a dropdown menu showing "COM3".
- 2. Adjust Current Connection Parameters:** A section enclosed in a red rounded rectangle. It contains:
 - Port Name: "COM3" (text box)
 - Baud Rate: "9600" (dropdown menu)
 - Data Bits: "8" (dropdown menu)
 - Parity: "None" (dropdown menu)
 - Stop Bits: "One" (dropdown menu)
 - Type: "direct" (dropdown menu)
 - Connection Name: "My COMM Port COM3" (text box)
- 3. Save to SiteID (connection parameters for all points with this SiteID will be overriten):** A section with a SiteID text box containing "1" and a "Save" button.

Visit us at **www.inetsupervisor.com**

Technical Support Phone: +1 (760) 634 6845

Technical Support e-mail: support@quarkcommunications.us

Sales e-mail: sales@quarkcommunications.us