

InetSupervisor™ - *Tech Bulletin 004*

This document provides configuration tips for Dreamweaver access to remote site using FTP File Transfer Protocol

Last updated: Sep. 20, 2006

Description

HOWTO: Configure Dreamweaver to work with web pages located on a remote server.

Affected applications

Dreamweaver/HMI Web

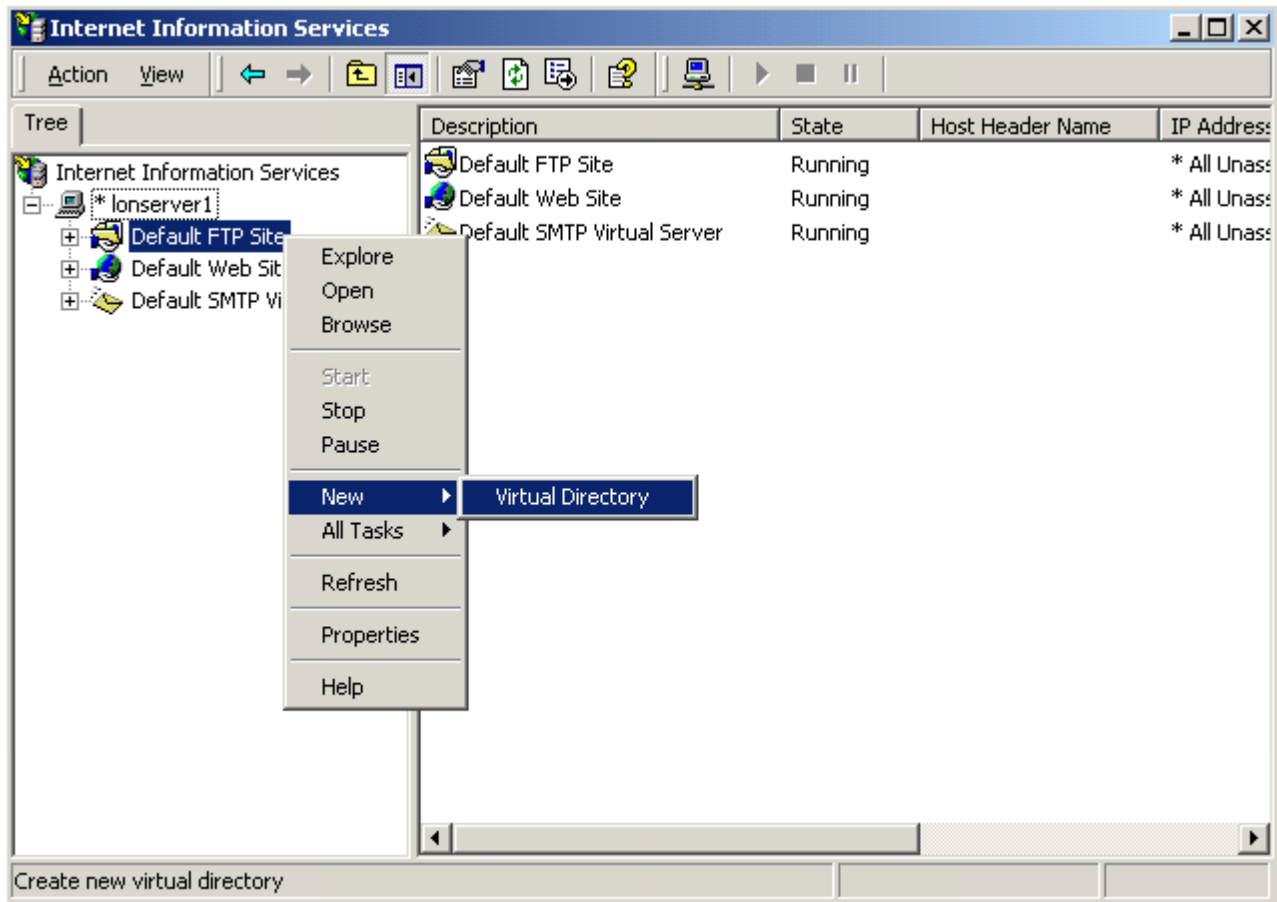
Summary

OS: Windows 2000 Pro

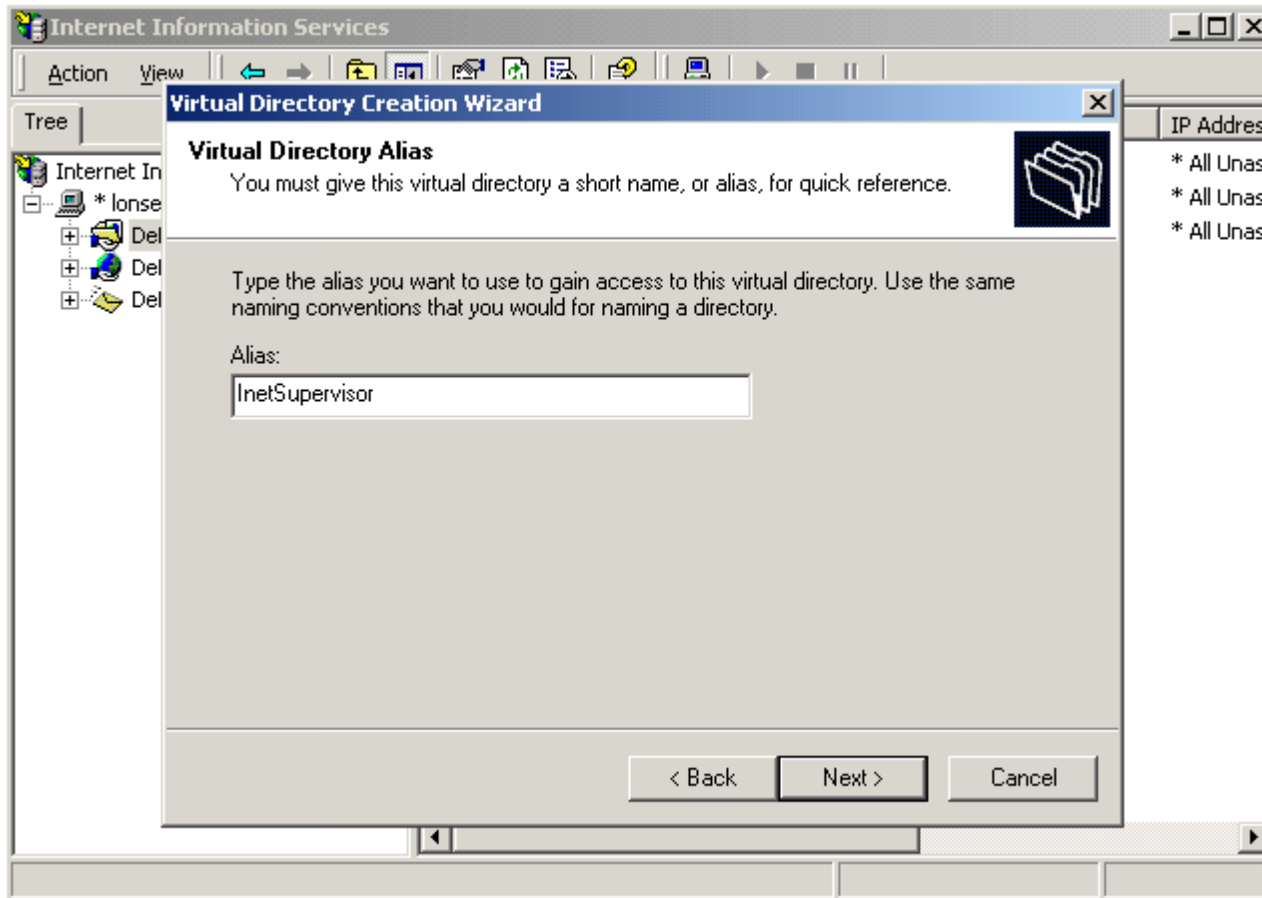
Description: InetSupervisor is a web-based graphical front-end for Automation Systems. The InetSupervisor setup program automatically configures the target PC ("InetSERVER") to allow for web page editing locally using Dreamweaver. The InetServer however can be configured to allow remote web editing and be updated using FTP. Follow the instruction No. 1 to configure the FTP and instruction No. 2 to configure Dreamweaver for remote editing.

Step 1. Configure FTP on the remote server

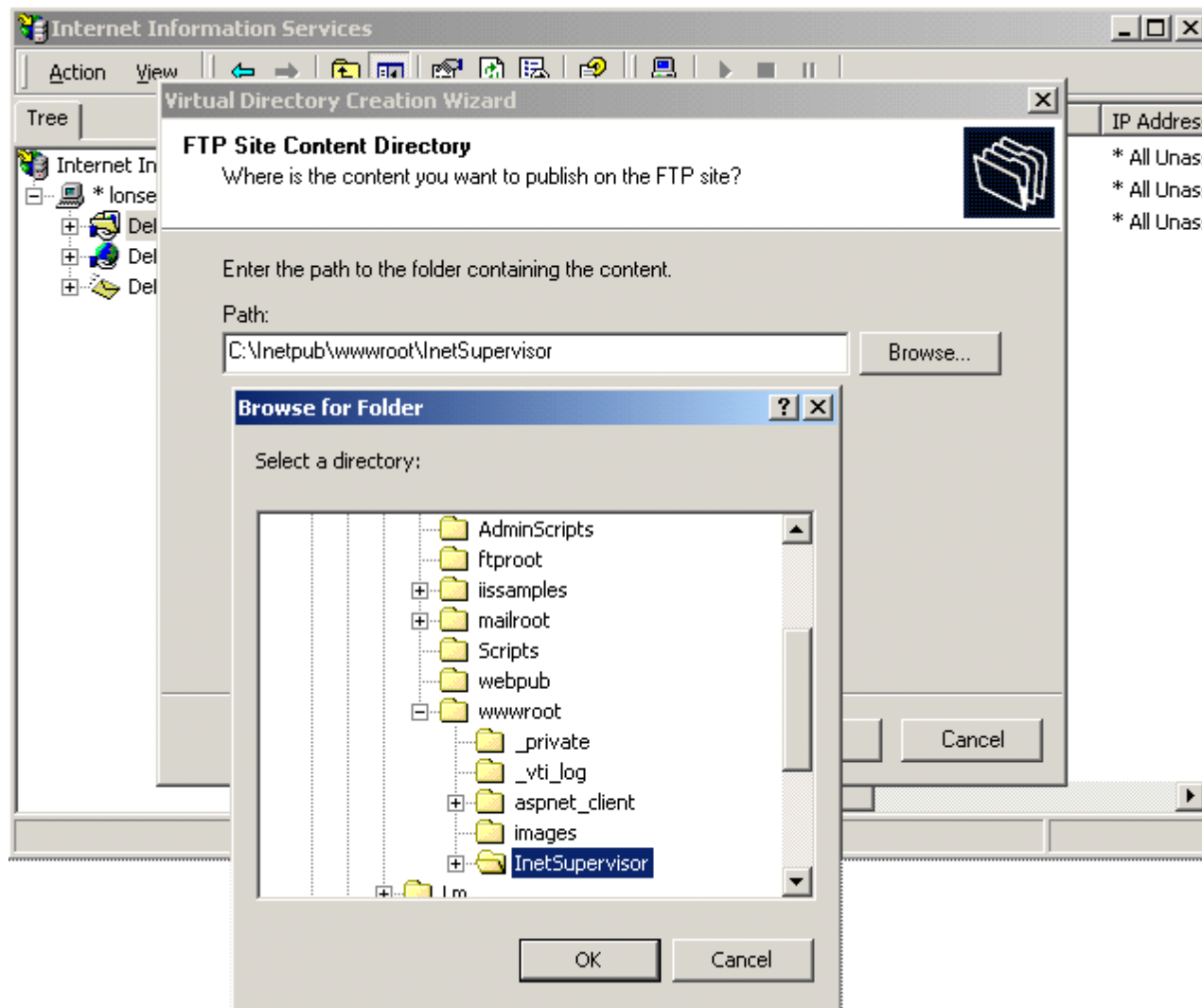
- Click on Start button, and then go to Settings, Control Panel.
- Then double click on Administrative Tools, double click Internet Services Manager.
- Expand the tree by clicking on plus + next to LONSERVER, then right click on Default FTP Site, click New, Virtual Directory, at the wizard click Next.



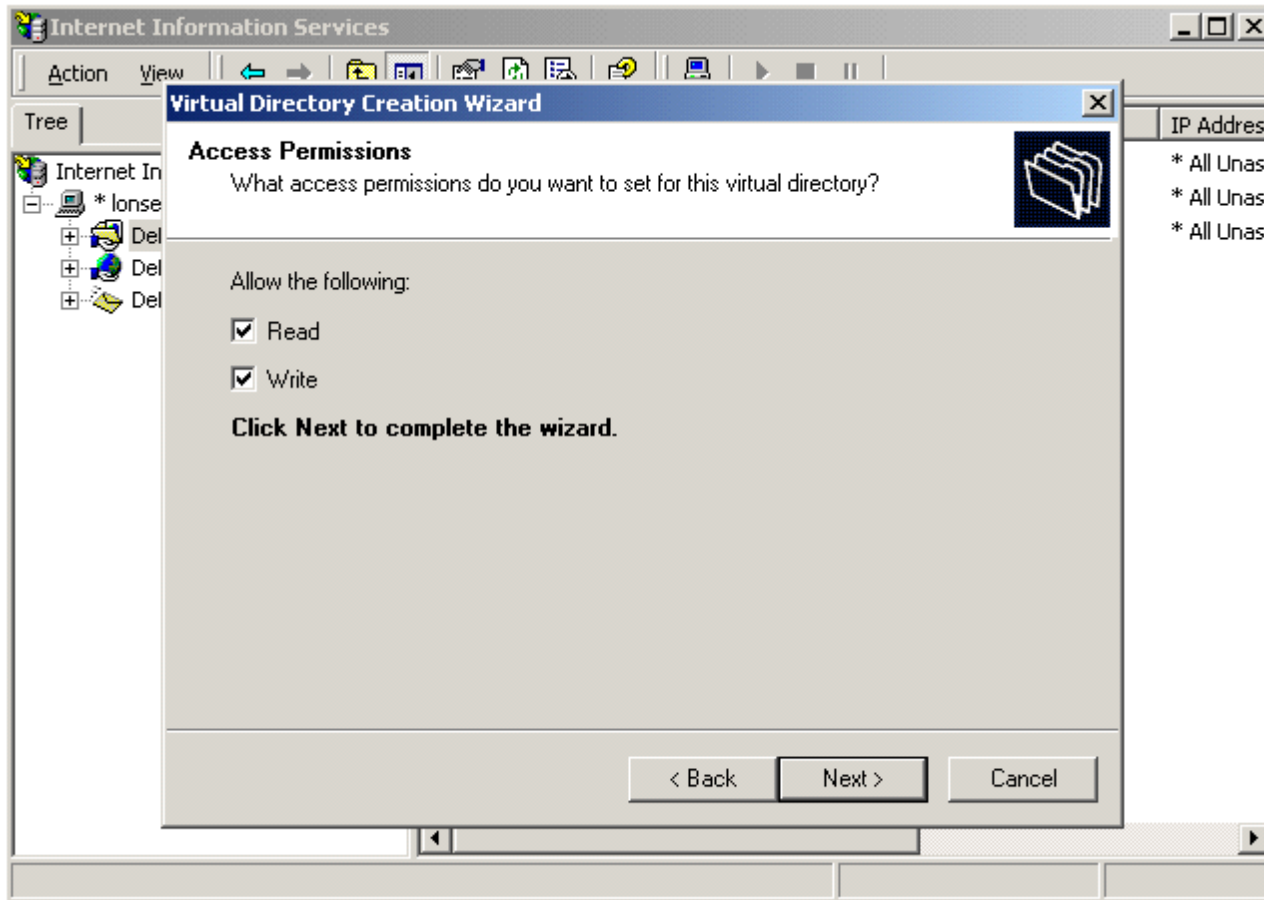
- When prompted for Alias enter HMI and click Next.



- Click on Browse button, and navigate to the following directory C:\inetpub\wwwroot\HMI and click OK and Next



- Under Access Permissions make sure read and write are checked and click Next.



- When you have finish the Virtual Directory Creation Wizard click Finish. NOTE: (FTP Access will be used for G.U.I. design from a remote computer using Dreamweaver.)

Step 2. Configure Dreamweaver

1. Connect this computer(LONSERVER) and remote computer(Laptop) to the Ethernet network.

1. Verify that both computers can "see each other". You can use ping command to do that. Click on Start button, Programs, Accessories, and then Command Prompt. At the prompt enter **ping 111.222.333.444** where **111.222.333.444** is the IP address of computer being tested if using static IP address, or **ping ComputerName** if using LAN and dynamic IP address.
2. When connection is confirmed launch **Dreamweaver** software on your Laptop. Dreamweaver evaluation copy can be downloaded from Macromedia web site <http://www.macromedia.com>. Macromedia also offers Fireworks, a graphics editing software that nicely integrates with the Dreamweaver. Before you begin editing the G.U.I. you will need to configure LONSERVER web parameters.
3. Using **Windows Explorer** create new folder to store all web content (local copy). By default **c:\lm\webs\my webs name**.
4. At the Dreamweaver's menu bar click on **Site, New Site**. Click on **Advanced** bar and in **Site Definition** dialog box enter desired web site name **my webs name** for **Site Name**. Enter **c:\lm\webs\my webs name** for local root folder. Enter **http://111.222.333.444/HMI** for HTTP Address, where **111.222.333.444** is the static IP Address of the LONSERVER computer. Next click on **Remote Info** category, select **ftp** for access, enter **111.222.333.444** for **FTP Host**. Enter **HMI** for **Host Directory**. Enter Administrators login name for **Login** and Administrators password for **Password**. (This comes from the LONSERVER windows login for the Administrator). Next select **Testing Server** from **Category**, select **ftp** for access, enter **111.222.333.444** for **FTP Host**. Enter **HMI** for **Host Directory**. Enter Administrators login name for Login and Administrators password for Password. (This comes from the LONSERVER windows login for the Administrator). Click **Site, Connect** to connect to the LONSERVER.
5. Now you will get all files from the LONSERVER to your remote Laptop, to do this click **Site, Get** or press Ctrl+Shift+D.